

FLANGES

BS EN 1092-1 RAISED FACE SLIP ON



1/2" NB - 24" NB
304L/316L
PN6/PN10/PN16/PN25/PN40
PN16 AVAILABLE O/D / METRIC

BS EN 1092-1 RAISED FACE BLIND



1/2" NB - 24" NB
304L/316L
PN6/PN10/PN16/PN25/PN40

BS EN 1092-1 RAISED FACE WELD NECK



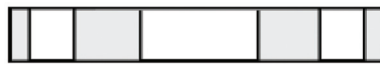
1/2" NB - 12" NB
304L/316L
PN6/PN10/PN16/PN25/PN40
SCH5S/SCH10S/SCH40S/SCH80S

BS EN 1092-1 SCREWED BSP'T



1/2" NB - 6" NB
316L
PN16

BS EN 1092-1 FLAT FACED REDUCED THICKNESS



1" - 12"
304L/316L
PN16 BORED O/D / METRIC

BS EN 1092-1 FLAT FACED REDUCED THICKNESS BLIND



1" - 12"
304L/316L
PN16

BS10 FLAT FACED SLIP ON



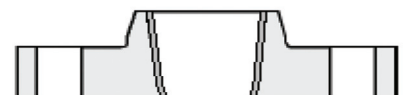
1" NB - 12" NB
304L/316L
TABLE 'D' / TABLE 'E' / TABLE 'F'
TABLE 'E' AVAILABLE BORED O/D

BS10 FLAT FACED BLIND



1" NB - 12" NB
304L/316L
TABLE 'D' / TABLE 'E' / TABLE 'F'

BS10 FLAT FACED SCREWED BSP'T



1/2" NB - 4" NB
316L
TABLE 'E' SCREWED BSP'T

FLANGES



ANSI B16.5 RAISED FACE SLIP ON



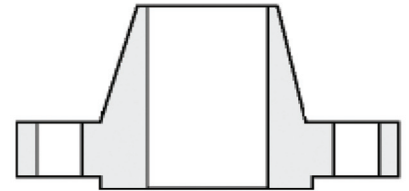
1/2" NB - 24" NB
304L/316L
150LB/300LB
(OTHER RATINGS AVAILABLE)

ANSI B16.5 RAISED FACE BLIND



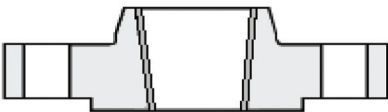
1/2" NB - 24" NB
304L/316L
150LB/300LB
(OTHER RATINGS AVAILABLE)

ANSI B16.5 RAISED FACE WELD NECK



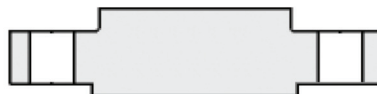
1/2" NB - 24" NB
304L/316L
150LB/300LB
SCH5S/SCH10S/SCH40S/SCH80S
(OTHER RATINGS AVAILABLE)

ANSI B16.5 SCREWED



1/2" NB - 2" NB
316L
150LB
SCREWED BSP/T/NPT
(OTHER RATINGS AVAILABLE)

ANSI B16.5 RAISED FACE BOSSED BLIND



1/2" NB - 2" NB
304L/316L
150LB/300LB
(OTHER RATINGS AVAILABLE)

ANSI B16.5 RAISED FACE SOCKET WELD



1/2" NB - 2" NB
304L/316L
150LB SCHED 40S
(OTHER RATINGS AVAILABLE)

ANSI B16.5 FLAT FACED REDUCED THICKNESS



1" - 12"
304L/316L
150LB BORED O/D / METRIC

ANSI B16.5 FLAT FACED REDUCED THICKNESS BLIND



1" - 12"
304L/316L
150LB

DIMENSIONS TO ANSI B16.5