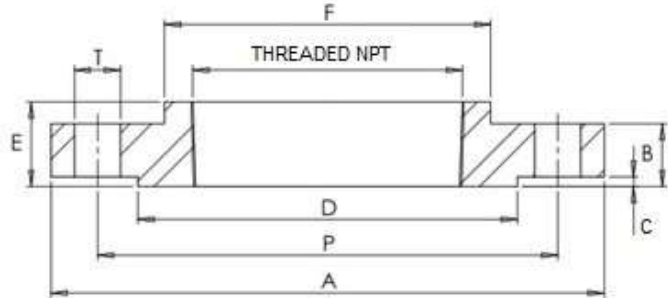


EN1092-1 PN16/13B RFSC NPT



#Number of Bolt Holes

1- FOR SIZES DN15 – DN40 PN16 & PN40 ARE IDENTICAL

Part Number	Size	A	B	C	D	E	F	P	T	#	Kg (Pc)
015F16/40/13NPT	DN15 ¹	95	16	2	45	22	35	65	14	4	0.78
020F16/40/13NPT	DN20 ¹	105	18	2	58	26	45	75	14	4	1.10
025F16/40/13NPT	DN25 ¹	115	18	2	68	28	52	85	14	4	1.36
032F16/40/13NPT	DN32 ¹	140	18	2	78	30	60	100	18	4	1.92
040F16/40/13NPT	DN40 ¹	150	18	3	88	32	70	110	18	4	2.18
050F16/13NPT	DN50	165	18	3	102	28	84	125	18	4	2.51
065F16/13NPT	DN65	185	18	3	122	32	104	145	18	4	3.20
080F16/13NPT	DN80	200	20	3	138	34	118	160	18	8	3.98
100F16/13NPT	DN100	220	20	3	162	40	140	180	18	8	4.58
125F16/13NPT	DN125	250	22	3	188	44	168	210	18	8	6.27
150F16/13NPT	DN150	285	22	3	212	44	195	240	22	8	8.50

*Grade 316/L

*RFSC = Raised Faced Screwed

*Dimensions in MM

*Dimensions are for guidance only – Please call to confirm if critical!