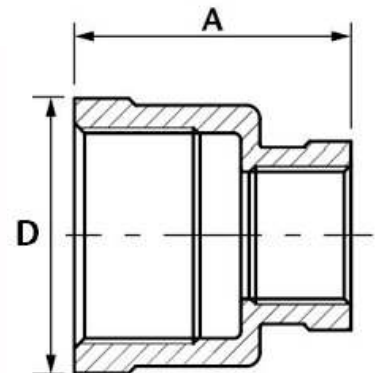


Reducing Socket



Part Number	Nominal Pipe Size	Rating	D	L	Weight Kg/Pce
008X006BSPRS	1/4" X 1/8"	150 PSI	17.5	26	0.02
010X006BSPRS	3/8" X 1/8"	150 PSI	21	30	0.04
010X008BSPRS	3/8" X 1/4"	150 PSI	21	30	0.04
015X006BSPRS	1/2" X 1/8"	150 PSI	27	31	0.06
015X008BSPRS	1/2" X 1/4"	150 PSI	27	32	0.06
015X010BSPRS	1/2" X 3/8"	150 PSI	27	34	0.06
020X008BSPRS	3/4" X 1/4"	150 PSI	32	35	0.12
020X010BSPRS	3/4" X 3/8"	150 PSI	32	36	0.12
020X015BSPRS	3/4" X 1/2"	150 PSI	32	36	0.12
025X008BSPRS	1" X 1/4"	150 PSI	39	40	0.14
025X010BSPRS	1" X 3/8"	150 PSI	39	41	0.14
025X015BSPRS	1" X 1/2"	150 PSI	39	41	0.14
025X020BSPRS	1" X 3/4"	150 PSI	39	42	0.14
032X015BSPRS	1 1/4" X 1/2"	150 PSI	48.5	43	0.20
032X020BSPRS	1 1/4" X 3/4"	150 PSI	48.5	44	0.20
032X025BSPRS	1 1/4" X 1"	150 PSI	48.5	45	0.21

Part Number	Nominal Pipe Size	Rating	D	L	Weight Kg/Pce
040X015BSPRS	1 1/2" X 1/2"	150 PSI	55	45	0.29
040X020BSPRS	1 1/2" X 3/4"	150 PSI	55	46	0.29
040X025BSPRS	1 1/2" X 1"	150 PSI	55	47	0.30
040X032BSPRS	1 1/2" X 1 1/4"	150 PSI	55	49	0.31
050X015BSPRS	2" X 1/2"	150 PSI	67	45	0.37
050X020BSPRS	2" X 3/4"	150 PSI	67	46	0.38
050X025BSPRS	2" X 1"	150 PSI	67	48	0.40
050X032BSPRS	2" X 1 1/4"	150 PSI	67	49	0.45
050X040BSPRS	2" X 1 1/2"	150 PSI	67	50	0.45
065X040BSPRS	2 1/2" X 1 1/2"	150 PSI	84	55	0.54
065X050BSPRS	2 1/2" X 2"	150 PSI	84	55	0.60
080X040BSPRS	3" X 1 1/2"	150 PSI	98.5	55	0.90
080X050BSPRS	3" X 2"	150 PSI	98.5	62	1.00
080X065BSPRS	3" X 2 1/2"	150 PSI	98.5	72	1.15
100X050BSPRS	4" X 2"	150 PSI	123.5	97	1.45
100X065BSPRS	4" X 2 1/2"	150 PSI	123.5	69	1.30
100X080BSPRS	4" X 3"	150 PSI	123.5	73	1.35

*Cast Grade CF8M (316)

*Female Threads BSP'P (Parallel ISO 228-1)

*Other reductions may be available – Please call if required.

*Dimensions in MM

*Dimensions are for guidance only – Please call to confirm if critical!