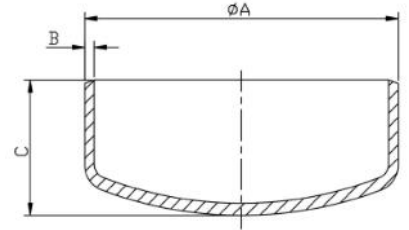


End Cap



ASTM A403 / ANSI B16.9

Part Number	Nominal Pipe Size	Schedule	Dimensions (mm)			Weight Kg/Pce
			A	B	C	
015BWECS106	½"	10S	21.3	2.11	25.4	0.04
020BWECS106	¾"	10S	26.7	2.11	25.4	0.05
025BWECS106	1"	10s	33.4	2.77	38.1	0.09
032BWECS106	1¼"	10s	42.2	2.77	38.1	0.13
040BWECS106	1½"	10s	48.3	2.77	38.1	0.14
050BWECS106	2"	10s	60.3	2.77	38.1	0.17
065BWECS106	2½"	10s	73.0	3.05	38.1	0.25
080BWECS106	3"	10s	88.9	3.05	50.8	0.40
100BWECS106	4"	10s	114.3	3.05	63.5	0.65
125BWECS106	5"	10s	141.3	3.40	76.2	1.02
150BWECS106	6"	10s	168.3	3.40	88.9	1.36
200BWECS106	8"	10s	219.1	3.76	101.6	2.49
250BWECS106	10"	10s	273.1	4.19	127.0	4.90
300BWECS106	12"	10s	323.9	4.57	152.4	6.53
350BWECS106	14"	10s	355.6	4.78	165.1	8.16
400BWECS106	16"	10s	406.4	4.78	177.8	14.51
450BWECS106	18"	10s	457.2	4.78	203.2	13.00
500BWECS106	20"	10s	508.0	5.54	228.6	17.00
600BWECS106	24"	10s	609.6	6.35	266.7	26.00

*Grade 316/L

*Schedule 10s Wall Thickness

*Seamless Construction

*Dimensions are for guidance only – Please call to confirm if critical!