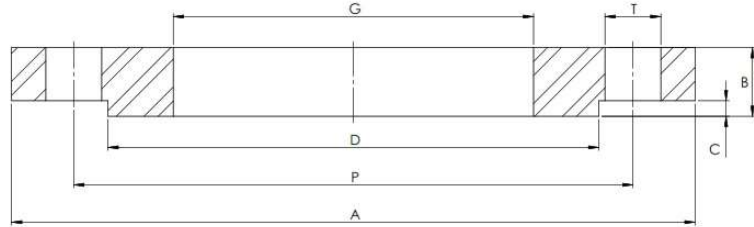


EN1092-1 PN16/01B RFSO BORED O/D



1 – FOR SIZES DN15 TO DN50 – PN16 & PN40 RATED FLANGES ARE IDENTICAL

Part Number	Size	A	B	C	D	G	P	T	No. of Holes	Kg (Pc)
015F16/40/01BOD6	DN15 ¹	95	14	2	45	13.2	65	14	4	0.85
020F16/40/01BOD6	DN20 ¹	105	16	2	58	19.6	75	14	4	1.06
025F16/40/01BOD6	DN25 ¹	115	16	2	68	25.9	85	14	4	1.34
032F16/40/01BOD6	DN32 ¹	140	18	2	78	32.3	100	18	4	2.04
040F16/40/01BOD6	DN40 ¹	150	18	3	88	38.6	110	18	4	2.51
050F16/40/01BOD6	DN50 ¹	165	20	3	102	51.3	125	18	4	3.37
065F16/01BOD6	DN65	185	20	3	122	64.0	145	18	4	3.65
080F16/01BOD6	DN80	200	20	3	138	76.7	160	18	8	3.88
100F16/01BOD6	DN100	220	22	3	158	102.1	180	18	8	4.64
125F16/01BOD6	DN125	250	22	3	188	130.5	210	18	8	5.79
150F16/01BOD6	DN150	285	24	3	212	156.5	240	22	8	7.59
200F16/01BOD6	DN200	340	26	3	268	206.5	295	22	12	10.3
250F16/01BOD6	DN250	405	29	3	320	256.5	355	26	12	15.9
300F16/01BOD6	DN300	460	32	4	378	306.5	410	26	12	21.2

*Grade 316/L

*RFSO – Raised Face Slip On

*Dimensions in MM

*Dimensions are for guidance only – Please call to confirm if critical!