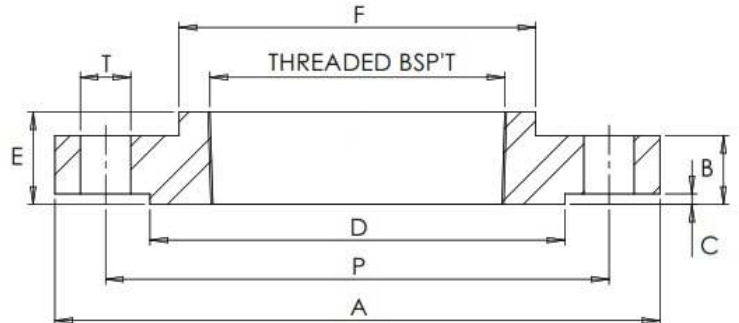


ANSI B16.5 150LB RFSC BSP'T



#Number of Bolt Holes

Part Number	Size	A	B	C	D	E	F	Thread	P	T	#	Kg (Pc)
015FAS316BSP	1/2"	89	11.1	1.6	35	16	30	BSP'T	60.3	15.9	4	0.44
020FAS316BSP	3/4"	98	12.7	1.6	43	16	38	BSP'T	69.8	15.9	4	0.70
025FAS316BSP	1"	108	14.3	1.6	51	17	49	BSP'T	79.4	15.9	4	0.91
032FAS316BSP	1 1/4"	117	15.9	1.6	64	21	59	BSP'T	88.9	15.9	4	1.27
040FAS316BSP	1 1/2"	127	17.5	1.6	73	22	65	BSP'T	98.4	15.9	4	1.40
050FAS316BSP	2"	152	19.0	1.6	92	25	78	BSP'T	120.6	19.0	4	2.18
065FAS316BSP	2 1/2"	178	22.2	1.6	105	29	90	BSP'T	139.7	19.0	4	3.63
080FAS316BSP	3"	190	23.8	1.6	127	30	108	BSP'T	152.4	19.0	4	3.88
100FAS316BSP	4"	229	23.8	1.6	157	33	135	BSP'T	190.5	19.0	8	5.90
125FAS316BSP	5"	254	23.8	1.6	186	37	164	BSP'T	215.9	22.2	8	6.80
150FAS316BSP	6"	279	25.4	1.6	216	40	192	BSP'T	241.3	22.2	8	7.82

*Grade 316/L

*RFSC = Raised Faced Screwed

*Surface Finish on Raised Face = Ra 3.2-6.3 µm

*Dimensions in MM

*Dimensions are for guidance only – Please call to confirm if critical!