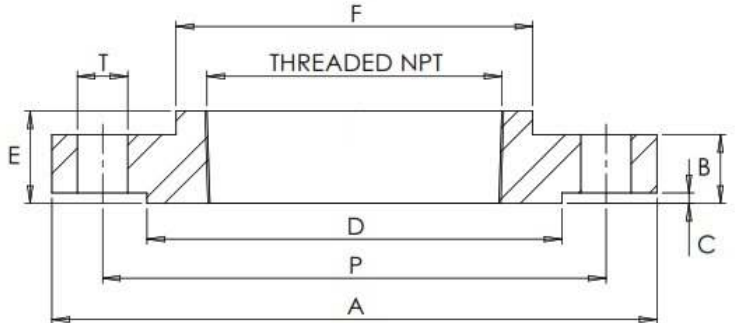


## ANSI B16.5 150LB RFSC NPT



### #Number of Bolt Holes

Part Number	Size	A	B	C	D	E	F	Thread	P	T	#	Kg (Pc)
015FAS316NPT	1/2"	89	11.1	1.6	35	16	30	NPT	60.3	15.9	4	0.44
020FAS316NPT	3/4"	98	12.7	1.6	43	16	38	NPT	69.8	15.9	4	0.70
025FAS316NPT	1"	108	14.3	1.6	51	17	49	NPT	79.4	15.9	4	0.91
032FAS316NPT	1 1/4"	117	15.9	1.6	64	21	59	NPT	88.9	15.9	4	1.27
040FAS316NPT	1 1/2"	127	17.5	1.6	73	22	65	NPT	98.4	15.9	4	1.40
050FAS316NPT	2"	152	19.0	1.6	92	25	78	NPT	120.6	19.0	4	2.18
065FAS316NPT	2 1/2"	178	22.2	1.6	105	29	90	NPT	139.7	19.0	4	3.63
080FAS316NPT	3"	190	23.8	1.6	127	30	108	NPT	152.4	19.0	4	3.88
100FAS316NPT	4"	229	23.8	1.6	157	33	135	NPT	190.5	19.0	8	5.90
125FAS316NPT	5"	254	23.8	1.6	186	37	164	NPT	215.9	22.2	8	6.80
150FAS316NPT	6"	279	25.4	1.6	216	40	192	NPT	241.3	22.2	8	7.82

\*Grade 316/L

\*RFSC = Raised Faced Screwed

\*Surface Finish on Raised Face = Ra 3.2-6.3 µm

\*Dimensions in MM

\*Dimensions are for guidance only – Please call to confirm if critical!