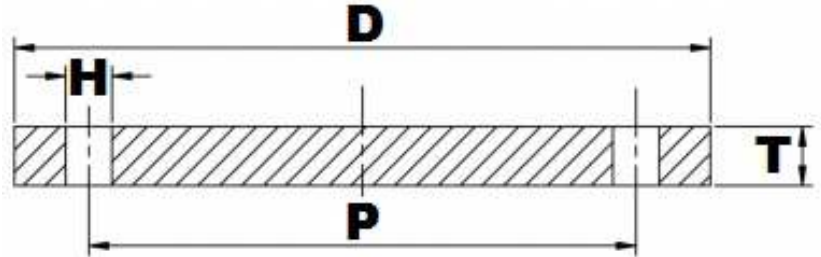


## BS10 TABLE 'D' FFBL



Part Number	Size	D	T	H	P	No. of Holes	Kg (Pce)
025FDB304L	1"	114.30	4.76	14.29	82.55	4	0.34
032FDB304L	1¼"	120.65	6.35	14.29	87.31	4	0.53
040FDB304L	1½"	133.35	6.35	14.29	98.43	4	0.63
050FDB304L	2"	152.40	7.94	17.46	114.30	4	1.04
065FDB304L	2½"	165.10	7.94	17.46	127.00	4	1.23
080FDB304L	3"	184.15	9.53	17.46	146.05	4	1.91
100FDB304L	4"	215.90	9.53	17.46	177.80	4	2.63
125FDB304L	5"	254.00	12.70	17.46	209.55	8	4.85
150FDB304L	6"	279.40	12.70	17.46	234.95	8	6.09
200FDB304L	8"	336.55	12.70	17.46	292.10	8	8.67
250FDB304L	10"	406.40	15.88	22.23	355.60	8	15.78
300FDB304L	12"	457.20	19.05	22.23	406.40	12	23.85
350FDB304L	14"	527.05	22.23	25.40	469.90	12	37.01
400FDB304L	16"	577.85	22.23	25.4	520.70	12	44.70
450FDB304L	18"	641.35	25.40	25.4	584.20	12	63.21
500FDB304L	20"	704.85	28.58	28.58	641.35	16	85.72
600FDB304L	24"	825.50	31.75	28.58	755.65	16	130.8

\*Grade 304/L

\*FFBL = Flat Faced Blind

\*Dimensions in MM

\*Dimensions are for guidance only – Please call to confirm if critical!