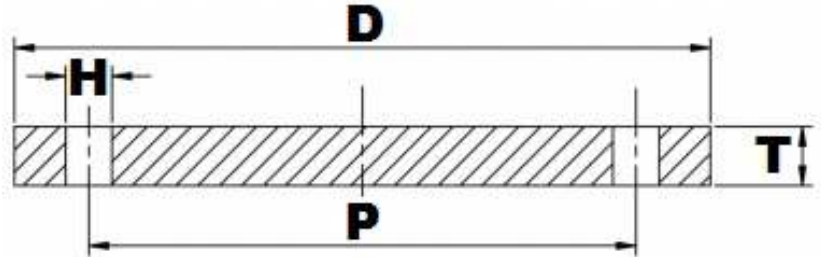


BS10 TABLE 'D' FFBL



Part Number	Size	D	T	H	P	No. of Holes	Kg (Pce)
025FDB316L	1"	114.30	4.76	14.29	82.55	4	0.34
032FDB316L	1¼"	120.65	6.35	14.29	87.31	4	0.53
040FDB316L	1½"	133.35	6.35	14.29	98.43	4	0.63
050FDB316L	2"	152.40	7.94	17.46	114.30	4	1.04
065FDB316L	2½"	165.10	7.94	17.46	127.00	4	1.23
080FDB316L	3"	184.15	9.53	17.46	146.05	4	1.91
100FDB316L	4"	215.90	9.53	17.46	177.80	4	2.63
125FDB316L	5"	254.00	12.70	17.46	209.55	8	4.85
150FDB316L	6"	279.40	12.70	17.46	234.95	8	6.09
200FDB316L	8"	336.55	12.70	17.46	292.10	8	8.67
250FDB316L	10"	406.40	15.88	22.23	355.60	8	15.78
300FDB316L	12"	457.20	19.05	22.23	406.40	12	23.85
350FDB316L	14"	527.05	22.23	25.40	469.90	12	37.01
400FDB316L	16"	577.85	22.23	25.4	520.70	12	44.70
450FDB316L	18"	641.35	25.40	25.4	584.20	12	63.21
500FDB316L	20"	704.85	28.58	28.58	641.35	16	85.72
600FDB316L	24"	825.50	31.75	28.58	755.65	16	130.8

*Grade 316/L

*FFBL = Flat Faced Blind

*Dimensions in MM

*Dimensions are for guidance only – Please call to confirm if critical!