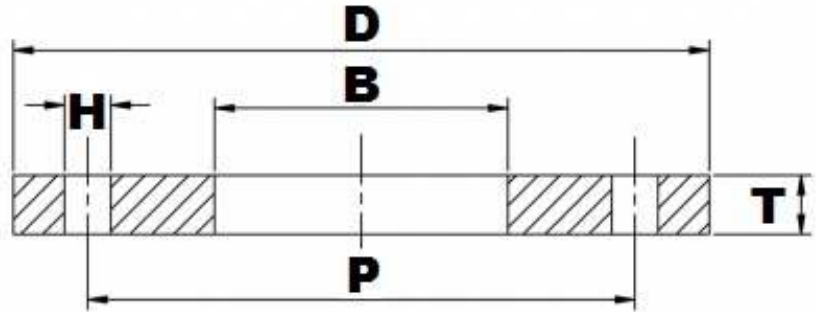


BS10 TABLE 'D' FFSO



Part Number	Size	D	B	T	H	P	No. of Holes	Kg (Pce)
025FDS304L	1"	114.30	34.54	4.76	14.29	82.55	4	0.31
032FDS304L	1¼"	120.65	43.18	6.35	14.29	87.31	4	0.45
040FDS304L	1½"	133.35	49.53	6.35	14.29	98.43	4	0.53
050FDS304L	2"	152.40	62.00	7.94	17.46	114.30	4	0.85
065FDS304L	2½"	165.10	74.70	7.94	17.46	127.00	4	0.95
080FDS304L	3"	184.15	90.70	9.53	17.46	146.05	4	1.42
100FDS304L	4"	215.90	116.0	9.53	17.46	177.80	4	1.84
125FDS304L	5"	254.00	143.8	12.70	17.46	209.55	8	3.25
150FDS304L	6"	279.40	170.7	12.70	17.46	234.95	8	3.85
200FDS304L	8"	336.55	221.5	12.70	17.46	292.10	8	4.85
250FDS304L	10"	406.40	276.4	15.88	22.23	355.60	8	8.30
300FDS304L	12"	457.20	327.2	19.05	22.23	406.40	12	11.32
350FDS304L	14"	527.05	359.16	22.23	25.40	469.90	12	19.34
400FDS304L	16"	577.85	410.46	22.23	25.4	520.70	12	21.58
450FDS304L	18"	641.35	461.77	25.40	25.4	584.20	12	29.61
500FDS304L	20"	704.85	513.08	28.58	28.58	641.35	16	39.19
600FDS304L	24"	825.50	615.95	31.75	28.58	755.65	16	56.57

*Grade 304/L

*Bored to suit Nominal Bore Pipe

*FFSO = Flat Faced Slip-on

*Dimensions in MM

*Dimensions are for guidance only – Please call to confirm if critical!