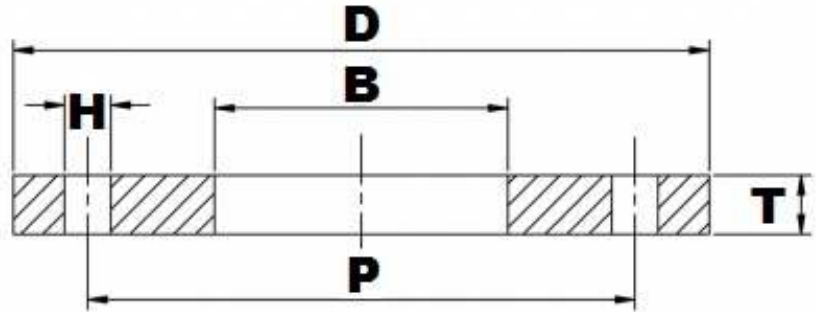


BS10 TABLE 'D' FFSO



Part Number	Size	D	B	T	H	P	No. of Holes	Kg (Pce)
025FDS316L	1"	114.30	34.54	4.76	14.29	82.55	4	0.31
032FDS316L	1¼"	120.65	43.18	6.35	14.29	87.31	4	0.45
040FDS316L	1½"	133.35	49.53	6.35	14.29	98.43	4	0.53
050FDS316L	2"	152.40	62.00	7.94	17.46	114.30	4	0.85
065FDS316L	2½"	165.10	74.70	7.94	17.46	127.00	4	0.95
080FDS316L	3"	184.15	90.70	9.53	17.46	146.05	4	1.42
100FDS316L	4"	215.90	116.0	9.53	17.46	177.80	4	1.84
125FDS316L	5"	254.00	143.8	12.70	17.46	209.55	8	3.25
150FDS316L	6"	279.40	170.7	12.70	17.46	234.95	8	3.85
200FDS316L	8"	336.55	221.5	12.70	17.46	292.10	8	4.85
250FDS316L	10"	406.40	276.4	15.88	22.23	355.60	8	8.30
300FDS316L	12"	457.20	327.2	19.05	22.23	406.40	12	11.32
350FDS316L	14"	527.05	359.16	22.23	25.40	469.90	12	19.34
400FDS316L	16"	577.85	410.46	22.23	25.4	520.70	12	21.58
450FDS316L	18"	641.35	461.77	25.40	25.4	584.20	12	29.61
500FDS316L	20"	704.85	513.08	28.58	28.58	641.35	16	39.19
600FDS316L	24"	825.50	615.95	31.75	28.58	755.65	16	56.57

*Grade 316/L

*Bored to suit Nominal Bore Pipe

*FFSO = Flat Faced Slip-on

*Dimensions in MM

*Dimensions are for guidance only – Please call to confirm if critical!