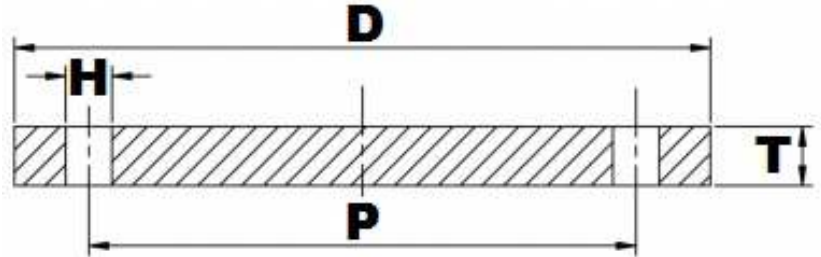


## BS10 TABLE 'E' FFBL



Part Number	Size	D	T	H	P	No. of Holes	Kg (Pce)
015FEB304L	1/2"	95.25	6.35	14.29	66.68	4	0.32
020FEB304L	3/4"	101.60	6.35	14.29	73.03	4	0.36
025FEB304L	1"	114.30	7.14	14.29	82.55	4	0.52
032FEB304L	1 1/4"	120.65	7.94	14.29	87.31	4	0.66
040FEB304L	1 1/2"	133.35	8.73	14.29	98.43	4	0.88
050FEB304L	2"	152.42	9.53	17.46	114.30	4	1.26
065FEB304L	2 1/2"	165.10	10.32	17.46	127.00	4	1.63
080FEB304L	3"	184.15	11.11	17.46	146.05	4	2.23
100FEB304L	4"	215.90	12.70	17.46	177.80	8	3.45
125FEB304L	5"	254.00	14.29	17.46	209.55	8	5.46
150FEB304L	6"	279.40	17.46	22.23	234.95	8	7.98
200FEB304L	8"	336.55	19.05	22.23	292.10	8	12.84
250FEB304L	10"	406.40	22.23	22.23	355.60	12	21.81
300FEB304L	12"	457.20	25.40	25.40	406.40	12	31.53
350FEB304L	14"	527.05	28.58	25.40	469.90	12	47.58
400FEB304L	16"	577.85	31.75	25.40	520.70	12	63.85
450FEB304L	18"	641.35	34.93	25.40	584.20	16	86.36
500FEB304L	20"	704.85	38.10	25.40	641.35	16	114.3
600FEB304L	24"	825.50	47.63	28.58	755.65	16	195.3

\*Grade 304/L

\*FFBL = Flat Faced Blind

\*Dimensions in MM

\*Dimensions are for guidance only – Please call to confirm if critical!