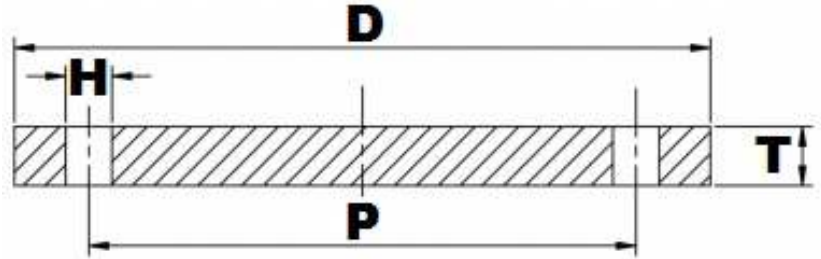


BS10 TABLE 'E' FFBL



Part Number	Size	D	T	H	P	No. of Holes	Kg (Pce)
015FEB316L	1/2"	95.25	6.35	14.29	66.68	4	0.32
020FEB316L	3/4"	101.60	6.35	14.29	73.03	4	0.36
025FEB316L	1"	114.30	7.14	14.29	82.55	4	0.52
032FEB316L	1 1/4"	120.65	7.94	14.29	87.31	4	0.66
040FEB316L	1 1/2"	133.35	8.73	14.29	98.43	4	0.88
050FEB316L	2"	152.42	9.53	17.46	114.30	4	1.26
065FEB316L	2 1/2"	165.10	10.32	17.46	127.00	4	1.63
080FEB316L	3"	184.15	11.11	17.46	146.05	4	2.23
100FEB316L	4"	215.90	12.70	17.46	177.80	8	3.45
125FEB316L	5"	254.00	14.29	17.46	209.55	8	5.46
150FEB316L	6"	279.40	17.46	22.23	234.95	8	7.98
200FEB316L	8"	336.55	19.05	22.23	292.10	8	12.84
250FEB316L	10"	406.40	22.23	22.23	355.60	12	21.81
300FEB316L	12"	457.20	25.40	25.40	406.40	12	31.53
350FEB316L	14"	527.05	28.58	25.40	469.90	12	47.58
400FEB316L	16"	577.85	31.75	25.40	520.70	12	63.85
450FEB316L	18"	641.35	34.93	25.40	584.20	16	86.36
500FEB316L	20"	704.85	38.10	25.40	641.35	16	114.3
600FEB316L	24"	825.50	47.63	28.58	755.65	16	195.3

*Grade 316/L

*FFBL = Flat Faced Blind

*Dimensions in MM

*Dimensions are for guidance only – Please call to confirm if critical!