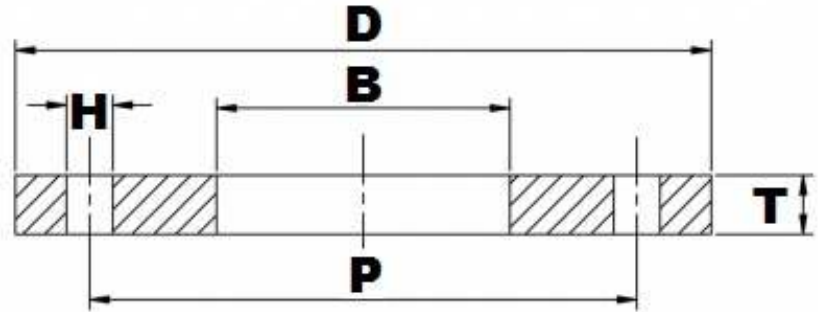


BS10 TABLE 'E' FFSO



Part Number	Size	D	B	T	H	P	No. of Holes	Kg (Pce)
015FES304L	1/2"	95.25	22.35	6.35	14.29	66.68	4	0.30
020FES304L	3/4"	101.60	27.69	6.35	14.29	73.03	4	0.33
025FES304L	1"	114.30	34.54	7.14	14.29	82.55	4	0.47
032FES304L	1 1/4"	120.65	43.18	7.94	14.29	87.31	4	0.56
040FES304L	1 1/2"	133.35	49.53	8.73	14.29	98.43	4	0.75
050FES304L	2"	152.42	62.00	9.53	17.46	114.30	4	1.03
065FES304L	2 1/2"	165.10	74.70	10.32	17.46	127.00	4	1.27
080FES304L	3"	184.15	90.70	11.11	17.46	146.05	4	1.65
100FES304L	4"	215.90	116.0	12.70	17.46	177.80	8	2.40
125FES304L	5"	254.00	143.8	14.29	17.46	209.55	8	3.67
150FES304L	6"	279.40	170.7	17.46	22.23	234.95	8	4.89
200FES304L	8"	336.55	221.5	19.05	22.23	292.10	8	7.12
250FES304L	10"	406.40	276.4	22.23	22.23	355.60	12	11.35
300FES304L	12"	457.20	327.2	25.40	25.40	406.40	12	14.82
350FES304L	14"	527.05	359.16	28.58	25.40	469.90	12	25.76
400FES304L	16"	577.85	410.46	31.75	25.40	520.70	12	30.83
450FES304L	18"	641.35	461.77	34.93	25.40	584.20	16	40.17
500FES304L	20"	704.85	513.08	38.10	25.40	641.35	16	52.25
600FES304L	24"	825.50	615.95	47.63	28.58	755.65	16	83.91

*Grade 304/L

*Bored to suit Nominal Bore Pipe

*FFSO = Flat Faced Slip-on

*Dimensions in MM

*Dimensions are for guidance only – Please call to confirm if critical!