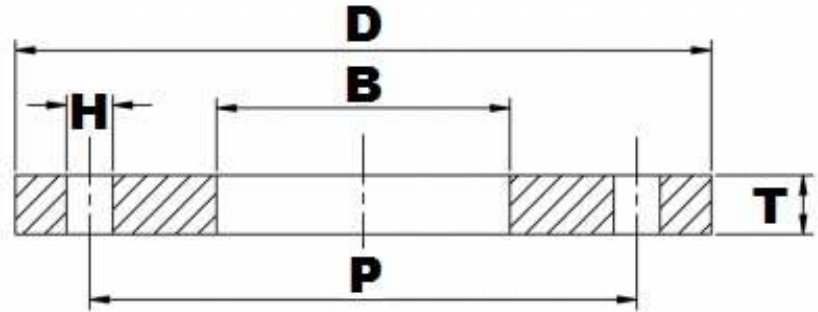


## BS10 TABLE 'E' FFSO



Part Number	Size	D	B	T	H	P	No. of Holes	Kg (Pce)
015FES316L	1/2"	95.25	22.35	6.35	14.29	66.68	4	0.30
020FES316L	3/4"	101.60	27.69	6.35	14.29	73.03	4	0.33
025FES316L	1"	114.30	34.54	7.14	14.29	82.55	4	0.47
032FES316L	1 1/4"	120.65	43.18	7.94	14.29	87.31	4	0.56
040FES316L	1 1/2"	133.35	49.53	8.73	14.29	98.43	4	0.75
050FES316L	2"	152.42	62.00	9.53	17.46	114.30	4	1.03
065FES316L	2 1/2"	165.10	74.70	10.32	17.46	127.00	4	1.27
080FES316L	3"	184.15	90.70	11.11	17.46	146.05	4	1.65
100FES316L	4"	215.90	116.0	12.70	17.46	177.80	8	2.40
125FES316L	5"	254.00	143.8	14.29	17.46	209.55	8	3.67
150FES316L	6"	279.40	170.7	17.46	22.23	234.95	8	4.89
200FES316L	8"	336.55	221.5	19.05	22.23	292.10	8	7.12
250FES316L	10"	406.40	276.4	22.23	22.23	355.60	12	11.35
300FES316L	12"	457.20	327.2	25.40	25.40	406.40	12	14.82
350FES316L	14"	527.05	359.16	28.58	25.40	469.90	12	25.76
400FES316L	16"	577.85	410.46	31.75	25.40	520.70	12	30.83
450FES316L	18"	641.35	461.77	34.93	25.40	584.20	16	40.17
500FES316L	20"	704.85	513.08	38.10	25.40	641.35	16	52.25
600FES316L	24"	825.50	615.95	47.63	28.58	755.65	16	83.91

\*Grade 316/L

\*Bored to suit Nominal Bore Pipe

\*FFSO = Flat Faced Slip-on

\*Dimensions in MM

\*Dimensions are for guidance only – Please call to confirm if critical!