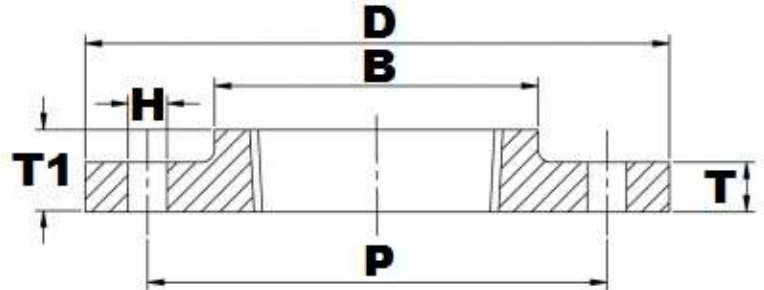


## BS10 TABLE 'E' FFSC BSP'T



Part Number	Size	D	T	T1	H	P	B	No. of Holes	Kg (Pce)
015FESC316L	1/2"	95.25	6.35	15.88	14.29	66.68	37.31	4	0.40
020FESC316L	3/4"	101.60	6.35	17.46	14.29	73.03	43.66	4	0.50
025FESC316L	1"	114.30	7.14	18.26	14.29	82.55	47.63	4	0.64
032FESC316L	1 1/4"	120.65	7.94	19.05	14.29	87.31	55.56	4	0.76
040FESC316L	1 1/2"	133.35	8.73	21.43	14.29	98.43	61.92	4	1.06
050FESC316L	2"	152.42	9.53	22.23	17.46	114.30	74.61	4	1.40
065FESC316L	2 1/2"	165.10	10.32	26.19	17.46	127.00	90.49	4	1.76
080FESC316L	3"	184.15	11.11	26.99	17.46	146.05	106.4	4	2.40
100FESC316L	4"	215.90	12.70	31.75	17.46	177.80	133.4	8	3.32
125FESC316L	5"	254.00	14.29	33.34	17.46	209.55	171.5	8	4.25
150FESC316L	6"	279.40	17.46	36.51	22.23	234.95	185.7	8	6.18

\*Grade 316/L

\*FFSC = Flat Faced Screwed

\*Dimensions in MM

\*Dimensions are for guidance only – Please call to confirm if critical!