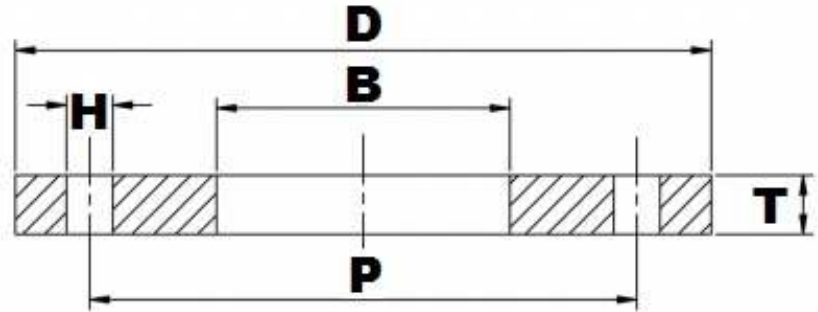


BS10 TABLE 'E' FFSO BORED O/D



Part Number	Size	D	B	T	H	P	No. of Holes	Kg (Pce)
025FESOD316L	1"	114.30	25.90	7.14	14.29	82.55	4	0.58
032FESOD316L	1¼"	120.65	32.25	7.94	14.29	87.31	4	0.72
040FESOD316L	1½"	133.35	38.60	8.73	14.29	98.43	4	0.90
050FESOD316L	2"	152.42	51.30	9.53	17.46	114.30	4	1.20
065FESOD316L	2½"	165.10	64.00	10.32	17.46	127.00	4	1.50
080FESOD316L	3"	184.15	76.70	11.11	17.46	146.05	4	2.06
100FESOD316L	4"	215.90	102.10	12.70	17.46	177.80	8	2.68
125FESOD316L	5"	254.00	129.50	14.29	17.46	209.55	8	4.24
150FESOD316L	6"	279.40	156.00	17.46	22.23	234.95	8	5.56
200FESOD316L	8"	336.55	206.00	19.05	22.23	292.10	8	8.18
250FESOD316L	10"	406.40	256.00	22.23	22.23	355.60	12	12.92
300FESOD316L	12"	457.20	306.00	25.40	25.40	406.40	12	15.94

*Grade 316/L

*Bored to suit O/D (Hygienic) / Metric Tru-Bore tube

*FFSO = Flat Faced Slip-on

*Dimensions in MM

*Dimensions are for guidance only – Please call to confirm if critical!