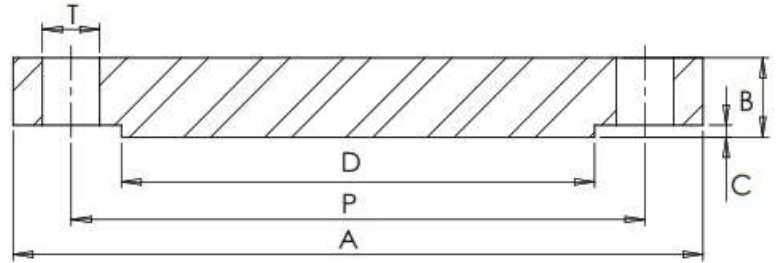


ANSI B16.5 150LB RFBL



#Number of Bolt Holes

Part Number	Size	A	B	C	D	P	T	#	Kg (Pc)
015FFARB316L	1/2"	89	11.1	1.6	35	60.3	15.9	4	0.82
020FFARB316L	3/4"	98	12.7	1.6	43	69.8	15.9	4	0.91
025FFARB316L	1"	108	14.3	1.6	51	79.4	15.9	4	1.00
032FFARB316L	1 1/4"	117	15.9	1.6	64	88.9	15.9	4	1.27
040FFARB316L	1 1/2"	127	17.5	1.6	73	98.4	15.9	4	1.36
050FFARB316L	2"	152	19.0	1.6	92	120.6	19.0	4	2.50
065FFARB316L	2 1/2"	178	22.2	1.6	105	139.7	19.0	4	4.40
080FFARB316L	3"	190	23.8	1.6	127	152.4	19.0	4	5.10
100FFARB316L	4"	229	23.8	1.6	157	190.5	19.0	8	7.71
125FFARB316L	5"	254	23.8	1.6	186	215.9	22.2	8	9.07
150FFARB316L	6"	279	25.4	1.6	216	241.3	22.2	8	11.79
200FFARB316L	8"	343	28.6	1.6	270	298.4	22.2	8	20.41
250FFARB316L	10"	406	30.2	1.6	324	362.0	25.4	12	31.75
300FFARB316L	12"	483	31.8	1.6	381	431.8	25.4	12	49.90
350FFARB316L	14"	533	34.9	1.6	413	476.2	28.6	12	59.42
400FFARB316L	16"	597	36.5	1.6	470	539.8	28.6	16	77.11
450FFARB316L	18"	635	39.7	1.6	533	577.8	31.8	16	94.80
500FFARB316L	20"	698	42.9	1.6	584	635.0	31.8	20	123.4
600FFARB316L	24"	813	47.6	1.6	692	749.3	34.9	20	186.4

*Grade 316/L

*RFBL = Raised Faced Blind

*Surface Finish on Raised Face = Ra 3.2-6.3 µm

*Dimensions in MM

*Dimensions are for guidance only – Please call to confirm if critical!