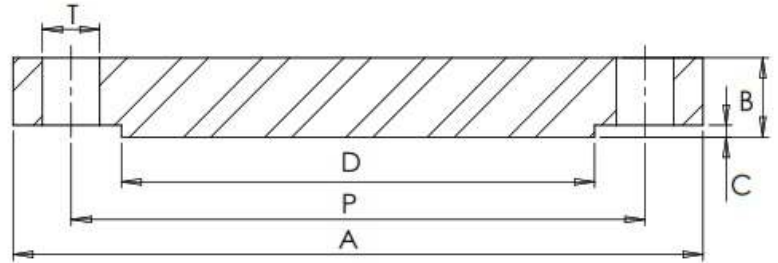


ANSI B16.5 300LB RFBL



#Number of Bolt Holes

Part Number	Size	A	B	C	D	P	T	#	Kg (Pc)
015FFARB3316L	1/2"	95	14.3	1.6	35	66.7	15.9	4	0.91
020FFARB3316L	3/4"	117	15.9	1.6	43	82.6	19.0	4	1.13
025FFARB3316L	1"	124	17.5	1.6	51	88.9	19.0	4	1.81
032FFARB3316L	1 1/4"	133	19.0	1.6	64	98.4	19.0	4	2.72
040FFARB3316L	1 1/2"	156	20.6	1.6	73	114.3	22.2	4	3.18
050FFARB3316L	2"	165	22.2	1.6	92	127.0	19.0	8	3.63
065FFARB3316L	2 1/2"	190	25.4	1.6	105	149.2	22.2	8	5.44
080FFARB3316L	3"	210	28.6	1.6	127	168.3	22.2	8	7.26
100FFARB3316L	4"	254	31.8	1.6	157	200.0	22.2	8	12.25
125FFARB3316L	5"	279	34.9	1.6	186	235.0	22.2	8	15.88
150FFARB3316L	6"	318	36.5	1.6	216	269.9	22.2	12	22.68
200FFARB3316L	8"	381	41.3	1.6	270	330.2	25.4	12	36.74
250FFARB3316L	10"	444	47.6	1.6	324	387.4	28.6	16	57.61
300FFARB3316L	12"	521	50.8	1.6	381	450.8	31.8	16	83.46
350FFARB3316L	14"	584	54.0	1.6	413	514.4	31.8	20	107.1
400FFARB3316L	16"	648	57.2	1.6	470	571.5	34.9	20	139.3
450FFARB3316L	18"	711	60.3	1.6	533	628.6	34.9	24	176.9
500FFARB3316L	20"	775	63.5	1.6	584	685.8	34.9	24	223.2
600FFARB3316L	24"	914	69.8	1.6	692	812.8	41.3	24	342.0

*Grade 316/L

*RFBL = Raised Faced Blind

*Surface Finish on Raised Face = Ra 3.2-6.3 µm

*Dimensions in MM

*Dimensions are for guidance only – Please call to confirm if critical!