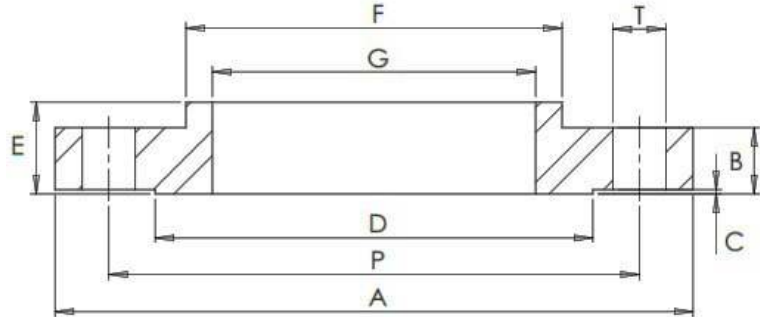


## ANSI B16.5 150LB RFSO



### #Number of Bolt Holes

Part Number	Size	A	B	C	D	E	F	G	P	T	#	Kg (Pc)
015FFAS316L	1/2"	89	11.1	1.6	35	16	30	22.4	60.3	15.9	4	0.44
020FFAS316L	3/4"	98	12.7	1.6	43	16	38	27.7	69.8	15.9	4	0.70
025FFAS316L	1"	108	14.3	1.6	51	17	49	34.5	79.4	15.9	4	0.91
032FFAS316L	1 1/4"	117	15.9	1.6	64	21	59	43.2	88.9	15.9	4	1.27
040FFAS316L	1 1/2"	127	17.5	1.6	73	22	65	49.5	98.4	15.9	4	1.40
050FFAS316L	2"	152	19.0	1.6	92	25	78	62.0	120.6	19.0	4	2.18
065FFAS316L	2 1/2"	178	22.2	1.6	105	29	90	74.7	139.7	19.0	4	3.63
080FFAS316L	3"	190	23.8	1.6	127	30	108	90.7	152.4	19.0	4	3.88
100FFAS316L	4"	229	23.8	1.6	157	33	135	116.1	190.5	19.0	8	5.90
125FFAS316L	5"	254	23.8	1.6	186	37	164	143.8	215.9	22.2	8	6.80
150FFAS316L	6"	279	25.4	1.6	216	40	192	170.7	241.3	22.2	8	7.82
200FFAS316L	8"	343	28.6	1.6	270	44	246	221.5	298.4	22.2	8	13.6
250FFAS316L	10"	406	30.2	1.6	324	49	305	276.4	362.0	25.4	12	18.0
300FFAS316L	12"	483	31.8	1.6	381	56	365	327.2	431.8	25.4	12	26.5
350FFAS316L	14"	533	34.9	1.6	413	57	400	359.2	476.2	28.6	12	35.4
400FFAS316L	16"	597	36.5	1.6	470	64	457	410.5	539.8	28.6	16	42.2
450FFAS316L	18"	635	39.7	1.6	533	68	505	461.8	577.8	31.8	16	54.4
500FFAS316L	20"	698	42.9	1.6	584	73	559	513.1	635.0	31.8	20	72.1
600FFAS316L	24"	813	47.6	1.6	692	83	664	616.0	749.4	34.9	20	95.3

\*Grade 316/L

\*RFSO = Raised Faced Slip On

\*Surface Finish on Raised Face = Ra 3.2-6.3 µm

\*Dimensions in MM

\*Dimensions are for guidance only – Please call to confirm if critical!