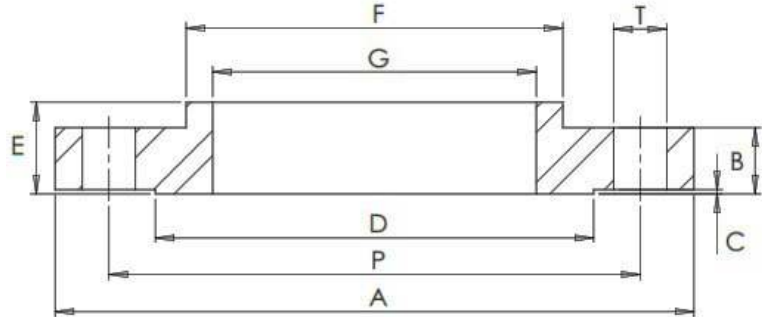


ANSI B16.5 300LB RFSO



#Number of Bolt Holes

Part Number	Size	A	B	C	D	E	F	G	P	T	#	Kg (Pc)
015FFAS3316L	1/2"	95	14.3	1.6	35	22	38	22.4	66.7	15.9	4	0.68
020FFAS3316L	3/4"	117	15.9	1.6	43	25	48	27.7	82.6	19.0	4	1.22
025FFAS3316L	1"	124	17.5	1.6	51	27	54	34.5	88.9	19.0	4	1.46
032FFAS3316L	1 1/4"	133	19.0	1.6	64	27	64	43.2	98.4	19.0	4	1.78
040FFAS3316L	1 1/2"	156	20.6	1.6	73	30	70	49.5	114.3	22.2	4	2.95
050FFAS3316L	2"	165	22.2	1.6	92	33	84	62.0	127.0	19.0	8	3.18
065FFAS3316L	2 1/2"	190	25.4	1.6	105	38	100	74.7	149.2	22.2	8	4.60
080FFAS3316L	3"	210	28.6	1.6	127	43	117	90.7	168.3	22.2	8	6.27
100FFAS3316L	4"	254	31.8	1.6	157	48	146	116.1	200.0	22.2	8	9.68
125FFAS3316L	5"	279	34.9	1.6	186	51	178	143.8	235.0	22.2	8	10.5
150FFAS3316L	6"	318	36.5	1.6	216	52	206	170.7	269.9	22.2	12	16.6
200FFAS3316L	8"	381	41.3	1.6	270	62	260	221.5	330.2	25.4	12	24.5
250FFAS3316L	10"	444	47.6	1.6	324	67	321	276.4	387.4	28.6	16	34.9
300FFAS3316L	12"	521	50.8	1.6	381	73	375	327.2	450.8	31.8	16	49.9
350FFAS3316L	14"	584	54.0	1.6	413	76	425	359.2	514.4	31.8	20	74.4
400FFAS3316L	16"	648	57.2	1.6	470	83	483	410.5	571.5	34.9	20	99.8
450FFAS3316L	18"	711	60.3	1.6	533	89	533	461.8	628.6	34.9	24	127.0
500FFAS3316L	20"	775	63.5	1.6	584	95	587	513.1	685.8	34.9	24	147.4
600FFAS3316L	24"	914	69.8	1.6	692	106	702	616.0	812.8	41.3	24	222.3

*Grade 316/L

*RFSO = Raised Faced Slip On

*Surface Finish on Raised Face = Ra 3.2-6.3 µm

*Dimensions in MM

*Dimensions are for guidance only – Please call to confirm if critical!