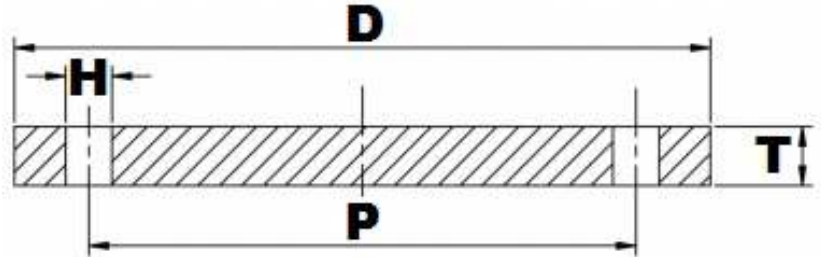


BS10 TABLE 'F' FFBL



Part Number	Size	D	T	H	P	No. of Holes	Kg (Pce)
015FFB316L	1/2"	95.25	9.53	14.29	66.68	4	0.50
020FFB316L	3/4"	101.60	9.53	14.29	73.03	4	0.59
025FFB316L	1"	120.65	9.53	17.46	87.31	4	0.80
032FFB316L	1 1/4"	133.35	12.70	17.46	98.43	4	1.42
040FFB316L	1 1/2"	139.70	12.70	17.46	104.78	4	1.58
050FFB316L	2"	165.10	15.88	17.46	127.00	4	2.78
065FFB316L	2 1/2"	184.15	15.88	17.46	146.05	8	3.14
080FFB316L	3"	203.20	15.88	17.46	165.10	8	3.79
100FFB316L	4"	228.60	19.05	17.46	190.50	8	6.00
125FFB316L	5"	279.40	22.23	22.23	234.95	8	10.15
150FFB316L	6"	304.80	22.23	22.23	260.35	12	12.02
200FFB316L	8"	368.30	25.40	22.23	323.85	12	20.31
250FFB316L	10"	431.80	28.58	25.40	381.00	12	31.49
300FFB316L	12"	488.95	31.75	25.40	438.15	16	44.79
350FFB316L	14"	544.83	34.93	28.58	495.30	16	62.91
400FFB316L	16"	609.60	41.28	28.58	552.45	20	90.42
450FFB316L	18"	673.10	44.45	31.75	609.60	20	118.6
500FFB316L	20"	736.60	50.80	31.75	673.10	24	162.3
600FFB316L	24"	850.90	57.15	34.93	781.05	24	244.8

*Grade 316/L

*FFBL = Flat Faced Blind

*Dimensions in MM

*Dimensions are for guidance only – Please call to confirm if critical!