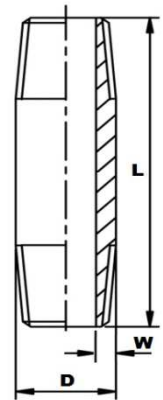


NPT 3000LB Barrel Nipple



Part Number	Nominal Pipe Size	Rating	D	L	W	Weight Kg/Pce
006NPT3KBNX51MM	1/8"	3000 PSI	10.29	51	2.41	0.023
008NPT3KBNX51MM	1/4"	3000 PSI	13.72	51	3.02	0.041
010NPT3KBNX51MM	3/8"	3000 PSI	17.15	51	3.20	0.057
015NPT3KBNX76MM	1/2"	3000 PSI	21.34	76	3.73	0.122
020NPT3KBNX76MM	3/4"	3000 PSI	26.67	76	3.91	0.167
025NPT3KBNX76MM	1"	3000 PSI	33.40	76	4.55	0.244
032NPT3KBNX76MM	1 1/4"	3000 PSI	42.16	76	4.85	0.338
040NPT3KBNX76MM	1 1/2"	3000 PSI	48.26	76	5.08	0.411
050NPT3KBNX76MM	2"	3000 PSI	60.30	76	5.54	0.568
065NPT3KBNX115MM	2 1/2"	3000 PSI	76.20 ¹	115	6.35	1.295
080NPT3KBNX120MM	3"	3000 PSI	88.90	120	7.62	1.829
100NPT3KBNX120MM	4"	3000 PSI	114.3	120	8.56	2.675

*Grade 316

*Male NPT Threads

*Machined from Sch80S Seamless Pipe(¹Machined from 3" O/D X 1/4" Wall)

*Dimensions to ANSI B16.11/BS3799

*Dimensions in MM

*Dimensions are for guidance only – Please call to confirm if critical!