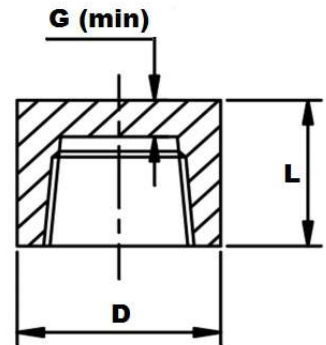


NPT 3000LB End Cap



Part Number	Nominal Pipe Size	Rating	D	L	G	Weight Kg/Pce
006NPT3KEC	1/8"	3000 PSI	16	19	4.8	0.02
008NPT3KEC	1/4"	3000 PSI	19	25	4.8	0.04
010NPT3KEC	3/8"	3000 PSI	22	25	4.8	0.06
015NPT3KEC	1/2"	3000 PSI	29	32	6.4	0.10
020NPT3KEC	3/4"	3000 PSI	35	37	6.4	0.18
025NPT3KEC	1"	3000 PSI	45	41	9.7	0.35
032NPT3KEC	1 1/4"	3000 PSI	57	44	9.7	0.53
040NPT3KEC	1 1/2"	3000 PSI	64	44	11.2	0.78
050NPT3KEC	2"	3000 PSI	76	48	12.7	1.00
065NPT3KEC	2 1/2"	3000 PSI	92	60	15.7	1.53
080NPT3KEC	3"	3000 PSI	108	65	19.0	1.95
100NPT3KEC	4"	3000 PSI	140	68	22.4	2.40

*Grade 316

*Female NPT Thread to ASME B1.20.1

*Dimensions to ANSI B16.11/BS3799

*Dimensions in MM

*Dimensions are for guidance only – Please call to confirm if critical!