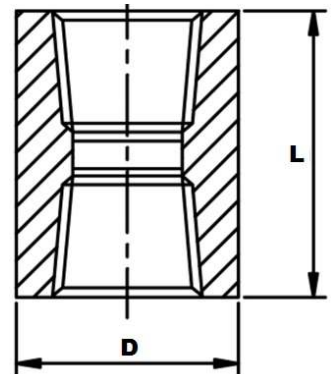


## NPT 3000LB Full Coupling



Part Number	Nominal Pipe Size	Rating	D	L	Weight Kg/Pce
006NPT3KFC	1/8"	3000 PSI	16	32	0.035
008NPT3KFC	1/4"	3000 PSI	19	35	0.040
010NPT3KFC	3/8"	3000 PSI	22	38	0.060
015NPT3KFC	1/2"	3000 PSI	29	48	0.140
020NPT3KFC	3/4"	3000 PSI	35	51	0.220
025NPT3KFC	1"	3000 PSI	45	60	0.400
032NPT3KFC	1 1/4"	3000 PSI	57	67	0.740
040NPT3KFC	1 1/2"	3000 PSI	64	79	1.040
050NPT3KFC	2"	3000 PSI	76	86	1.360
065NPT3KFC	2 1/2"	3000 PSI	92	92	2.650
080NPT3KFC	3"	3000 PSI	108	108	3.300
100NPT3KFC	4"	3000 PSI	140	121	4.00

\*Grade 316

\*Female NPT Threads to ASME B1.20.1

\*Dimensions to ANSI B16.11/BS3799

\*Dimensions in MM

\*Dimensions are for guidance only – Please call to confirm if critical!