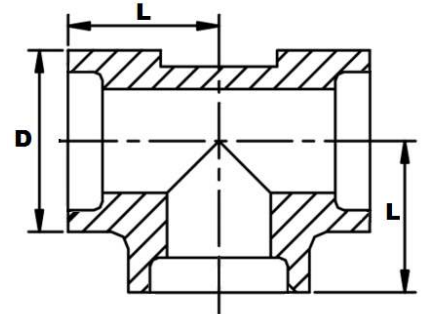


## Socket Weld 3000LB Equal Tee



Part Number	Nominal Pipe Size	Rating	D	L	Weight Kg/Pce
008SW3KET	1/4"	3000 PSI	20.7	21	0.210
010SW3KET	3/8"	3000 PSI	24.6	24	0.255
015SW3KET	1/2"	3000 PSI	30.0	26	0.310
020SW3KET	3/4"	3000 PSI	36.0	32	0.325
025SW3KET	1"	3000 PSI	44.1	35	0.600
032SW3KET	1 1/4"	3000 PSI	53.5	40	0.850
040SW3KET	1 1/2"	3000 PSI	60.0	45	1.290
050SW3KET	2"	3000 PSI	73.2	54	1.900

\*Grade 316

\*Dimensions to ANSI B16.11/BS3799

\*Dimensions in MM

\*Larger sizes are available to order

\*Dimensions are for guidance only – Please call to confirm if critical!