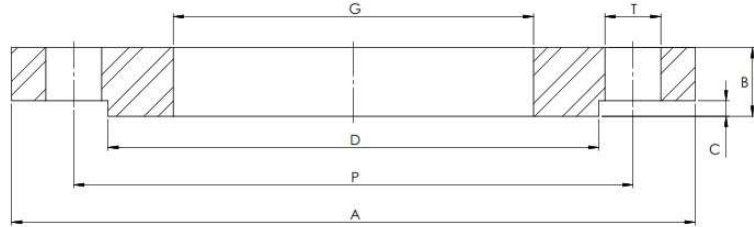


## EN1092-1 PN16/01B RFSO



- 1 – FOR SIZES DN15 TO DN50 – PN16 & PN40 RATED FLANGES ARE IDENTICAL  
 2 – OPTION FOR 74.70MM BORE AT SIZE DN65

Part Number	Size	A	B	C	D	G	P	T	No. of Holes	Kg (Pc)
015F16/40/01B4	DN15 <sup>1</sup>	95	14	2	45	22.0	65	14	4	0.67
020F16/40/01B4	DN20 <sup>1</sup>	105	16	2	58	27.5	75	14	4	0.94
025F16/40/01B4	DN25 <sup>1</sup>	115	16	2	68	34.5	85	14	4	1.11
032F16/40/01B4	DN32 <sup>1</sup>	140	18	2	78	43.5	100	18	4	1.82
040F16/40/01B4	DN40 <sup>1</sup>	150	18	3	88	49.5	110	18	4	2.08
050F16/40/01B4	DN50 <sup>1</sup>	165	20	3	102	61.5	125	18	4	2.73
065F16/01B4	DN65	185	20	3	122	77.5	145	18	4	3.28
065F16/01B4X74.7	DN65 <sup>2</sup>	185	20	3	122	74.7	145	18	4	3.39
080F16/01B4	DN80	200	20	3	138	90.5	160	18	8	3.60
100F16/01B4	DN100	220	22	3	158	116.0	180	18	8	4.39
125F16/01B4	DN125	250	22	3	188	143.8	210	18	8	5.41
150F16/01B4	DN150	285	24	3	212	170.5	240	22	8	7.14
200F16/01B4	DN200	340	26	3	268	221.5	295	22	12	9.73
250F16/01B4	DN250	405	29	3	320	276.5	355	26	12	14.2
300F16/01B4	DN300	460	32	4	378	327.5	410	26	12	19.0
350F16/01B4	DN350	520	35	4	438	359.5	470	26	16	28.2
400F16/01B4	DN400	580	38	4	490	411.0	525	30	16	35.9
450F16/01B4	DN450	640	42	4	550	462.0	585	30	20	46.1
500F16/01B4	DN500	715	46	4	610	513.5	650	33	20	64.0
600F16/01B4	DN600	840	55	5	725	616.5	770	36	20	102

\*Grade 304/L

\*RFSO – Raised Face Slip On

\*Dimensions in MM

\*Dimensions are for guidance only – Please call to confirm if critical!