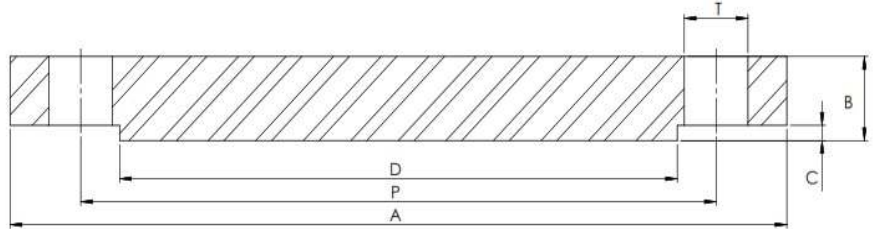


EN1092-1 PN16/05B RFBL



1 – FOR SIZES DN15 TO DN40 – PN16 & PN40 RATED FLANGES ARE IDENTICAL

Part Number	Size	A	B	C	D	P	T	No. of Holes	Kg (Pc)
015F16/40/05B4	DN15 ¹	95	16	2	45	65	14	4	0.81
020F16/40/05B4	DN20 ¹	105	18	2	58	75	14	4	1.14
025F16/40/05B4	DN25 ¹	115	18	2	68	85	14	4	1.38
032F16/40/05B4	DN32 ₁	140	18	2	78	100	18	4	2.03
040F16/40/05B4	DN40 ¹	150	18	3	88	110	18	4	2.35
050F16/05B4	DN50	165	18	3	102	125	18	4	2.88
065F16/05B4	DN65	185	18	3	122	145	18	4	3.62
080F16/05B4	DN80	200	20	3	138	160	18	8	4.61
100F16/05B4	DN100	220	20	3	158	180	18	8	5.65
125F16/05B4	DN125	250	22	3	188	210	18	8	8.13
150F16/05B4	DN150	285	22	3	212	240	22	8	10.5
200F16/05B4	DN200	340	24	3	268	295	22	12	16.2
250F16/05B4	DN250	405	26	3	320	355	26	12	25.0
300F16/05B4	DN300	460	28	4	378	410	26	12	35.1
350F16/05B4	DN350	520	30	4	438	470	26	16	48.0
400F16/05B4	DN400	580	32	4	490	525	30	16	63.5
450F16/05B4	DN450	640	40	4	550	585	30	20	96.6
500F16/05B4	DN500	715	44	4	610	650	33	20	133
600F16/05B4	DN600	840	54	5	725	770	36	20	226

*Grade 304/L

*RFBL – Raised Face Blind

*Dimensions in MM

*Dimensions are for guidance only – Please call to confirm if critical!