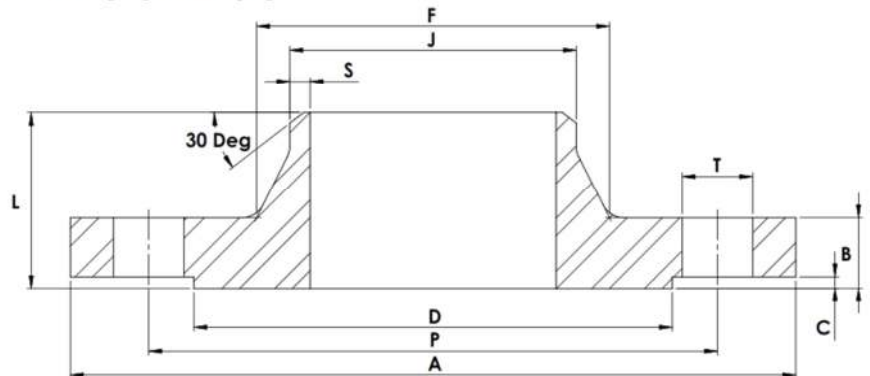


EN1092-1 PN16/11B RFWN SCH10S



#Number of Bolt Holes

Part Number	Size	A	B	C	D	L	F	J	S	P	T	#	Kg (Pc)
015F16/40/11B106	DN15 ¹	95	16	2	45	38	32	21.3	2.11	65	14	4	0.77
020F16/40/11B106	DN20 ¹	105	18	2	58	40	40	26.9	2.11	75	14	4	1.09
025F16/40/11B106	DN25 ¹	115	18	2	68	40	46	33.7	2.77	85	14	4	1.30
032F16/40/11B106	DN32 ¹	140	18	2	78	42	56	42.4	2.77	100	18	4	1.91
040F16/40/11B106	DN40 ¹	150	18	3	88	45	64	48.3	2.77	110	18	4	2.15
050F16/11B106	DN50	165	18	3	102	45	74	60.3	2.77	125	18	4	2.62
065F16/11B106	DN65	185	18	3	122	45	92	73.0	3.05	145	18	4	3.30
080F16/11B106	DN80	200	20	3	138	50	105	88.9	3.05	160	18	8	4.18
100F16/11B106	DN100	220	20	3	158	52	131	114.3	3.05	180	18	8	5.06
125F16/11B106	DN125	250	22	3	188	55	156	141.3	3.40	210	18	8	6.30
150F16/11B106	DN150	285	22	3	212	55	184	168.3	3.40	240	22	8	8.81
200F16/11B106	DN200	340	24	3	268	62	235	219.1	3.76	295	22	12	11.5
250F16/11B106	DN250	405	26	3	320	70	292	273.0	4.19	355	26	12	16.7
300F16/11B106	DN300	460	28	4	378	78	344	323.9	4.57	410	26	12	22.1
350F16/11B106	DN350	520	30	4	438	82	390	355.6	4.78	470	26	16	32.8
400F16/11B106	DN400	580	32	4	490	85	445	406.4	4.78	525	30	16	41.1
450F16/11B106	DN450	640	34	4	550	83	490	457.0	4.78	585	30	20	48.5
500F16/11B106	DN500	715	36	4	610	84	548	508.0	5.53	650	33	20	63.4
600F16/11B106	DN600	840	40	5	725	88	670	610.0	6.35	770	36	20	94.0

1 – FOR SIZES DN15 TO DN40 – PN16 & PN40 RATED FLANGES ARE IDENTICAL

*Grade 316/L

*RFWN = Raised Faced Weld Neck

*Surface Finish on Raised Face = Ra 3.2-6.3 µm

*Dimensions in MM

*Dimensions are for guidance only – Please call to confirm if critical!