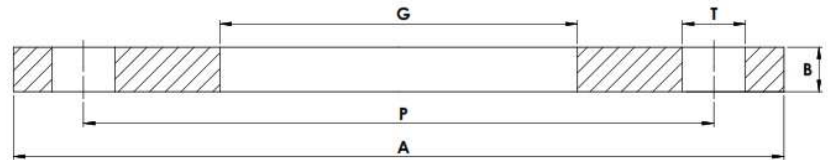


PN16 REDUCED THICKNESS FFSO BORED O/D



Part Number	Size	A	B	G	P	T	No. of Holes	Kg (Pce)
015F16/ROD6	DN15	95	4.76	13.2	65	14	4	0.24
020F16/ROD6	DN20	105	6.35	19.6	75	14	4	0.42
025F16/ROD6	DN25	115	7.14	25.9	85	14	4	0.55
032F16/ROD6	DN32	140	7.94	32.3	100	18	4	0.89
040F16/ROD6	DN40	150	8.73	38.6	110	18	4	1.38
050F16/ROD6	DN50	165	9.53	51.3	125	18	4	1.80
065F16/ROD6	DN65	185	10.32	64.0	145	18	4	2.50
080F16/ROD6	DN80	200	11.11	76.7	160	18	8	2.85
100F16/ROD6	DN100	220	12.70	102.1	180	18	8	3.45
125F16/ROD6	DN125	250	12.70	131.5	210	18	8	5.46
150F16/ROD6	DN150	285	12.70	156.5	240	22	8	6.25
200F16/ROD6	DN200	340	12.70	206.5	295	22	12	8.88
250F16/ROD6	DN250	405	15.88	256.5	355	26	12	17.38
300F16/ROD6	DN300	460	19.05	306.5	410	26	12	25.54

*Grade 316/L

*FFSO = Flat Faced Slip On

*PN16 Drilling x BS10 'E' / 'D' Thickness

*Dimensions in MM

*Dimensions are for guidance only – Please call to confirm if critical!