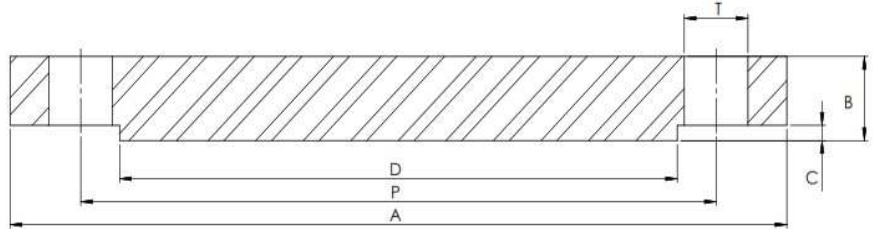


EN1092-1 PN40/05B RFBL



Part Number	Size	A	B	C	D	P	T	No. of Holes	Kg (Pc)
FOR SIZES DN15 TO DN40 USE TABLE PN16									
050F40/05B6	DN50	165	20	3	102	125	18	4	3.20
065F40/05B6	DN65	185	22	3	122	145	18	8	4.29
080F40/05B6	DN80	200	24	3	138	160	18	8	5.54
100F40/05B6	DN100	235	24	3	162	190	22	8	7.60
125F40/05B6	DN125	270	26	3	188	220	26	8	10.8
150F40/05B6	DN150	300	28	3	218	250	26	8	14.6
200F40/05B6	DN200	360	30	3	285	310	26	12	28.8
250F40/05B6	DN250	425	32	3	345	370	30	12	44.4
300F40/05B6	DN300	485	34	4	410	430	30	16	64.2
350F40/05B6	DN350	555	38	4	465	490	33	16	89.5
400F40/05B6	DN400	620	40	4	535	550	36	16	127
450F40/05B6	DN450	670	50	4	560	600	36	20	154
500F40/05B6	DN500	730	51	4	615	660	36	20	188
600F40/05B6	DN600	845	66	5	735	770	39	20	331

*Grade 316/L

*RFBL – Raised Face Blind

*Dimensions in MM

*Dimensions are for guidance only – Please call to confirm if critical!