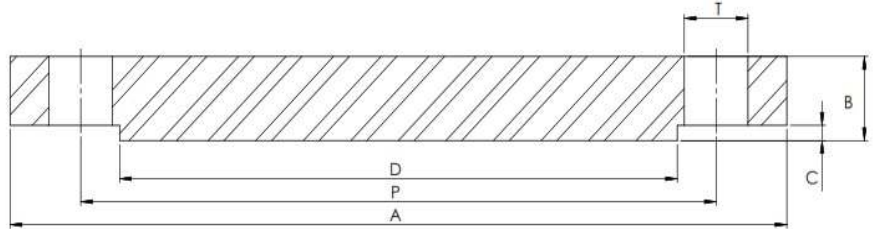


EN1092-1 PN6/05B RFBL



Part Number	Size	A	B	C	D	P	T	No. of Holes	Kg (Pc)
015F6/05B6	DN15	80	12	2	40	55	11	4	0.44
020F6/05B6	DN20	90	14	2	50	65	11	4	0.66
025F6/05B6	DN25	100	14	2	60	75	11	4	0.82
032F6/05B6	DN32	120	14	2	70	90	14	4	1.18
040F6/05B6	DN40	130	14	3	80	100	14	4	1.39
050F6/05B6	DN50	140	14	3	90	110	14	4	1.62
065F6/05B6	DN65	160	14	3	110	130	14	4	2.14
080F6/05B6	DN80	190	16	3	128	150	18	4	3.43
100F6/05B6	DN100	210	16	3	148	170	18	4	4.22
125F6/05B6	DN125	240	18	3	178	200	18	8	6.10
150F6/05B6	DN150	265	18	3	202	225	18	8	7.51
200F6/05B6	DN200	320	20	3	258	280	18	8	12.3
250F6/05B6	DN250	375	22	3	312	335	18	12	18.5
300F6/05B6	DN300	440	22	4	365	395	22	12	25.5
350F6/05B6	DN350	490	22	4	415	445	22	12	31.8
400F6/05B6	DN400	540	22	4	465	495	22	16	38.5
450F6/05B6	DN450	595	24	4	520	550	22	16	51.2
500F6/05B6	DN500	645	24	4	570	600	22	20	60.1
600F6/05B6	DN600	755	30	5	670	705	26	20	103

*Grade 316/L

*RFBL – Raised Face Blind

*Dimensions in MM

*Dimensions are for guidance only – Please call to confirm if critical!